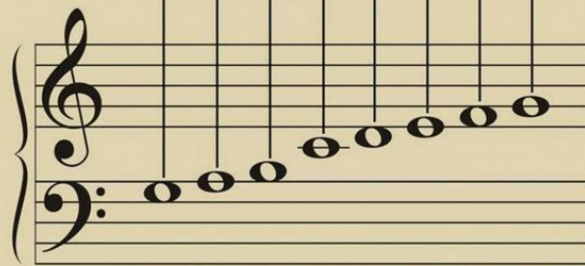
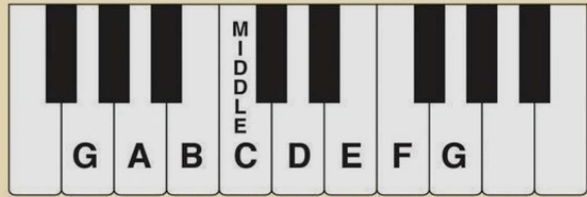


Bass Clef Note - G

This G in the bass clef is a 2nd (step) below A. It is located on the top space of the bass staff.



Play and say: **G A B C D E F G**
 space-line-space-line-space-line-space-line

- Before playing, scan the music and observe the musical form.

Shining Stars

Moving gently

A 3 on —?

The score is in 4/4 time. The right hand (RH) plays a melody of quarter notes: G4, A4, B4, C5, B4, A4, G4. The left hand (LH) plays a bass line of quarter notes: G2, A2, B2, C3, B2, A2, G2. A slur covers the first two measures of the RH. Dynamics include *f* and *mf*. Fingerings are indicated: 1, 2, 3 in the RH and 5, 2, 3 in the LH. A box 'A' highlights the first measure with '3 on —?' above it. A box '3' highlights the third measure with '2 on —?' below it.

Damper pedal down.

Teacher Duet: (Student plays 1 octave higher, without pedal)

The duet score is in 4/4 time. The Right Hand (R.H.) and Left Hand (L.H.) parts are shown. The R.H. part starts with a box '1' and '5' above the first measure. The L.H. part starts with a box '5' above the first measure. Dynamics include *mf-p* on repeat, *mf*, and *pp*. Fingerings are indicated: 1, 2, 3 in the R.H. and 5, 2, 3 in the L.H. A box '9' highlights the ninth measure. A box '13' highlights the thirteenth measure. A box '17' highlights the seventeenth measure.

5 **A**

p (echo)

9 **B**

f *p*

play $\frac{3}{1}$ together

play $\frac{2}{3}$ together

13 **A¹**

f

17 **Coda** (ending section)

p *p* *as soft as possible*

BOTH HANDS lift 8^{va} lift **BOTH HANDS** lift 15^{ma} (2 octaves higher)

Play both hands together. lift lift

$\frac{2}{3}$

Pedal up.



Point out a **broken 2nd**, **blocked 2nd**, then a **blocked 3rd**.
(Find a broken 3rd in *measure 1*. Look between treble and bass notes.)